

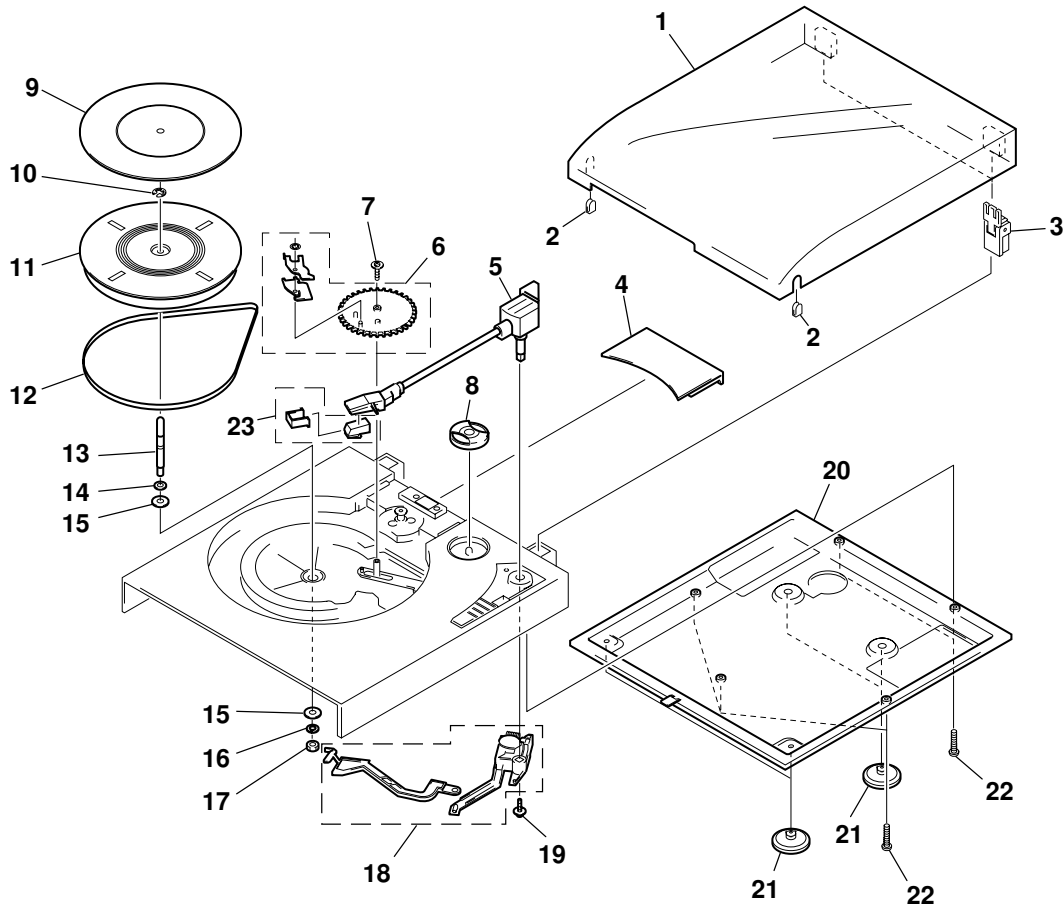
SECTION 2 EXPLODED VIEWS

NOTE:

- Items marked “*” are not stocked since they are seldom required for routine service. Some delay should be anticipated when ordering these items.
- The mechanical parts with no reference number in the exploded views are not supplied.
- Hardware (# mark) list and accessories and packing materials are given in the last of this parts list.

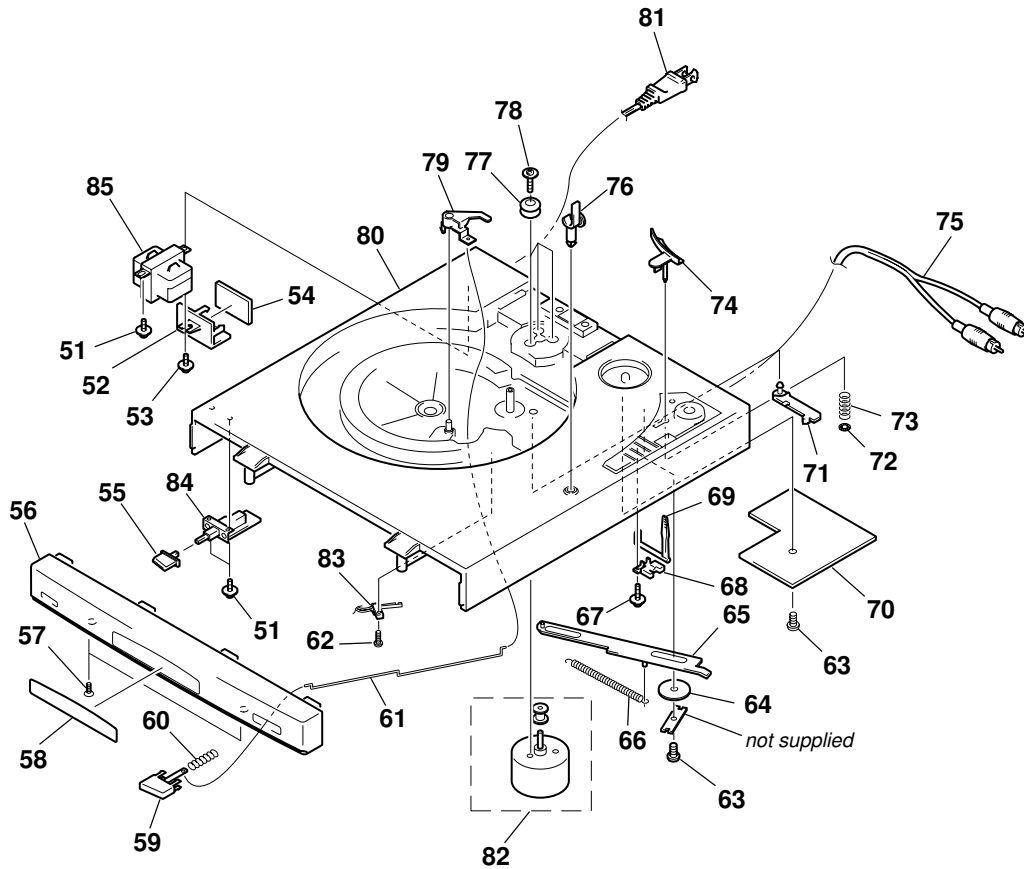
The components identified by mark \triangle or dotted line with mark \triangle are critical for safety. Replace only with part number specified.

2-1. STEREO TURNTABLE SYSTEM-1



Ref. No.	Part No.	Description	Remark	Ref. No.	Part No.	Description	Remark
1	4-213-962-01	DUST COVER		13	4-213-986-01	SPRING SHAFT	
2	4-213-963-01	DUST COVER STOPPER		14	4-213-988-01	WASHER	
3	4-213-959-01	HINGE ASSY		15	4-213-989-01	WASHER	
4	4-213-966-01	PLASTIC MOTOR COVER (S)		16	4-213-992-01	SPRING WASHER	
5	4-213-960-01	TONE ARM ASSY		17	4-213-993-01	NUT	
6	4-213-958-01	SPUR GEAR ASSY		18	4-213-957-01	RETURN LINK ASSY	
7	4-214-009-01	SCREW		19	4-214-004-01	SCREW	
8	4-214-018-01	ADAPTOR		*	20	4-213-977-01	BOTTOM BOARD
9	4-214-019-01	RUBBER MAT		21	4-213-979-01	RUBER BASE	
10	4-214-003-01	E RING		22	4-213-978-01	SCREW	
11	4-213-995-01	TURNTABLE PLATTER		23	4-951-290-01	STYLUS (CN-234)	
12	4-213-985-01	BELT					

2-2. STEREO TURNTABLE SYSTEM-2



The components identified by mark Δ or dotted line with mark Δ are critical for safety. Replace only with part number specified.

Ref. No.	Part No.	Description	Remark	Ref. No.	Part No.	Description	Remark
51	4-213-994-01	SCREW		71	4-213-965-01	PLASTIC RETURN BASE	
52	4-213-983-01	PROTECTOR COVER		72	4-214-005-01	4MM CSB RING	
53	4-213-964-01	SCREW		73	4-214-006-01	SPRING	
54	A-4405-641-A	PRIMARY BOARD, COMPLETE		74	4-213-967-01	TONE ARM ELEVATOR	
55	4-213-996-01	KNOB SPEED		75	1-555-116-11	CORD, PHONE	
56	4-213-997-01	FRONT PANEL (S)		76	4-213-956-01	ARM REST ASSY	
57	4-213-999-01	SCREW		77	4-213-981-01	CUSHION MOTOR	
58	4-213-998-01	PC PLATE (F.PANEL)		78	4-213-980-01	SCREW	
59	4-214-001-01	KNOB REJECT		79	4-213-987-01	WIPPER REJECT	
60	4-214-000-01	SPRING		* 80	4-213-990-01	MAIN CABINET (S)	
61	4-213-991-01	SPRING		Δ 81	1-575-975-11	CORD, POWER	
62	4-213-974-01	SCREW		82	A-4405-636-A	MOTOR BOARD, COMPLETE	
63	4-213-971-01	SCREW		83	1-570-666-11	SWITCH (LEAF)	
64	4-213-975-01	WASHER		84	1-771-542-11	SWITCH, PUSH (1 KEY)	
65	4-213-961-01	LEVER RETURN ASSY		Δ 85	1-433-497-11	TRANSFORMER, POWER	
66	4-213-972-01	SPRING				ACCESSORIES & PACKING MATERIALS	
67	4-214-004-01	SCREW				*****	
68	4-213-970-01	CUEING BASE		3-864-744-11	MANUAL, INSTRUCTION (ENGLISH)		
69	4-213-969-01	LEVER CUEING		4-214-018-01	ADAPTOR		
70	A-4405-638-A	PRE AMP BOARD, COMPLETE		4-214-019-01	RUBBER MAT		